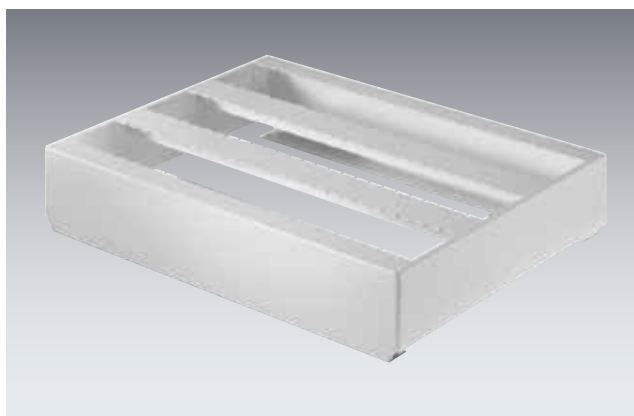


Drawer Frames & Inserts

The tool holding inserts shown on page 172 clip into the drawer frame which have 2, 3 or 4 rows. Drawer frames are available in 80 and 125mm heights to suit the tooling shank length. Choose a cabinet drawer front height large enough to accommodate your tooling's overall length.



Drawer frames are also available for cupboards, see page 179.

Empty drawer frame, add required inserts.
Any combination of CNC inserts may be used together in a single row up to the maximum number of sections per row.

Cabinet Width (mm)	Cabinet Depth (mm)	Rows	Sections Per Row	80mm high		125mm high	
				Order Ref.	Price £	Order Ref.	Price £
525	525	2	15	43013001.16V	62.25	43013002.16V	64.24
525	650	3	15	43013011.16V	59.39	43013012.16V	63.04
650	650	3	20	43013013.16V	65.86	43013014.16V	69.35
650	750	4	20	43013023.16V	72.92	43013024.16V	79.86
800	525	2	26	43013005.16V	70.09	43013006.16V	74.97
800	650	3	26	43013015.16V	70.93	43013016.16V	75.41
800	750	4	26	43013025.16V	78.28	43013026.16V	83.66
1050	525	2	36	43013007.16V	92.64	43013008.16V	99.84
1050	650	3	36	43013017.16V	82.41	43013018.16V	89.74
1050	750	4	36	43013027.16V	91.47	43013028.16V	98.64
1300	750	4	46	43013029.16V	107.61	43013030.16V	115.51

cupio cabinets

cupio mobile

cupio dividers

cupio cupboards

cupio benches

perfo

cnc

verso cabinets

verso mobile

verso cupboards

verso benches

facilities

cases & seating